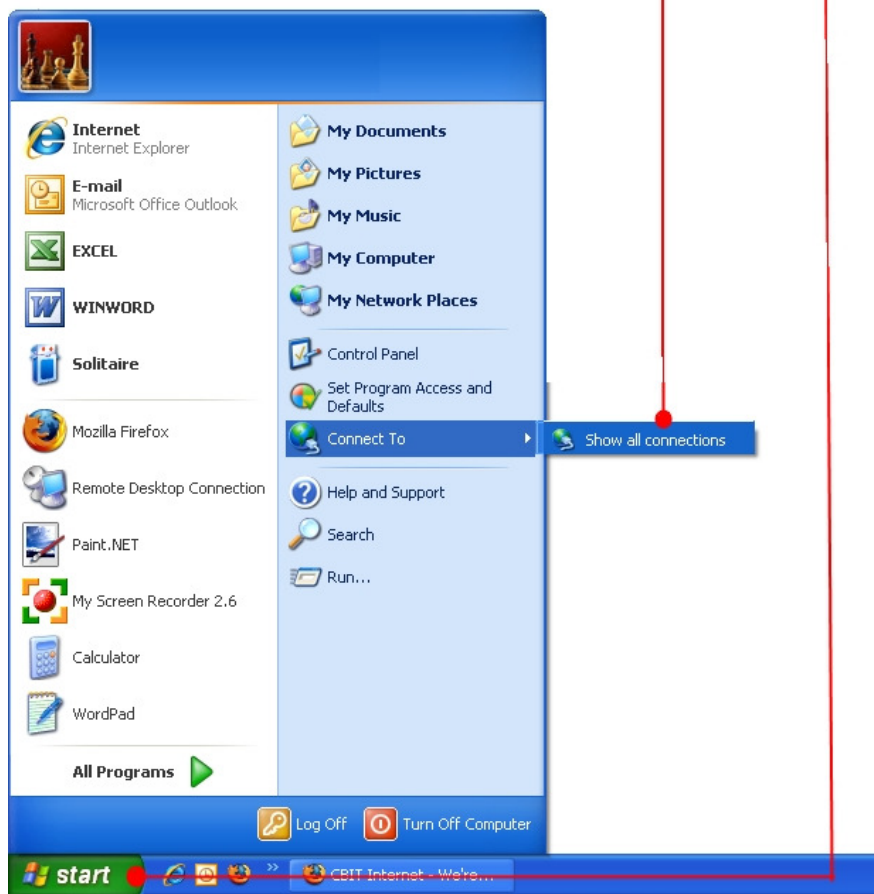


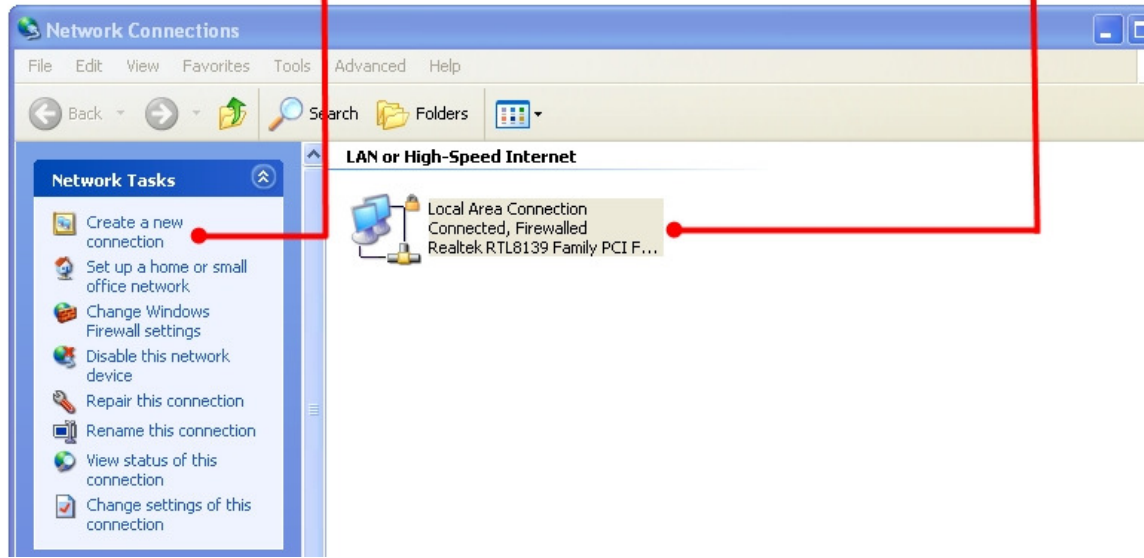
How To Set Up Your CBIT Account in Windows XP

- Step 1. Click the Start button
Step 2. Select Connect To then Show all connections

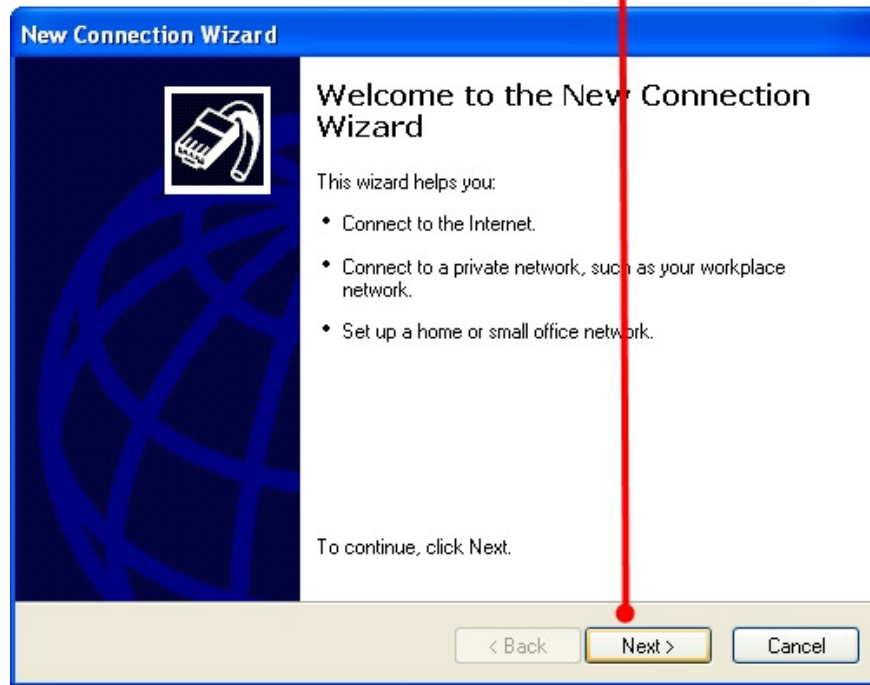


Step 3. At this stage you should see an icon representing your Ethernet card under LAN or High-Speed Internet. This will probably be named Local Area Connection.

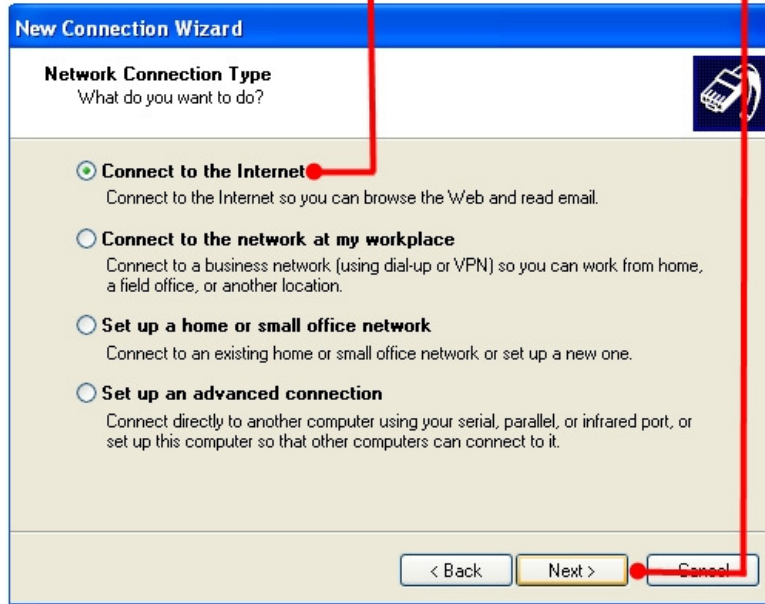
Step 4. Under Network Tasks in the navigation panel on the left, click "Create a new connection"



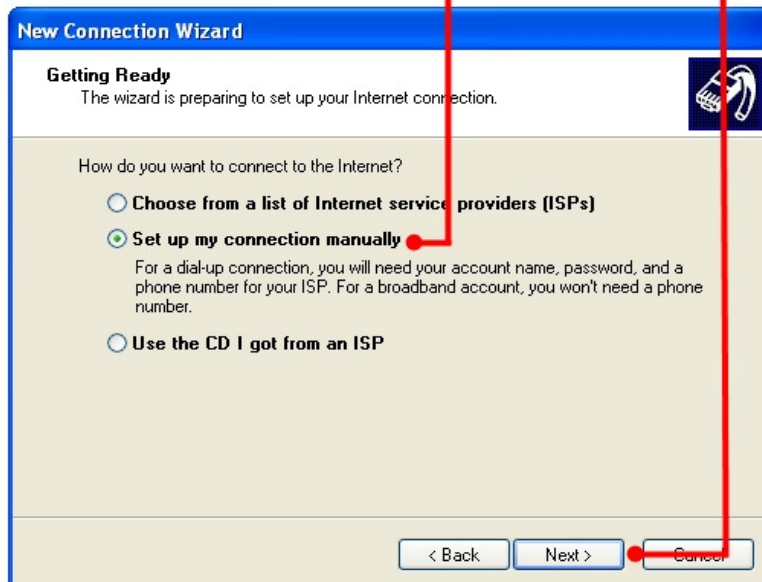
5. Click on "Next >"



Step 6. Ensure Connect to the Internet is selected and click the "Next >" button



Step 7. Select "Set up my connection manually" and click the "Next >" button.



Step 8. Select "Connect using a broadband connection that requires a username and password", then click the "Next >" button

New Connection Wizard

Internet Connection
How do you want to connect to the Internet?

- Connect using a dial-up modem**
This type of connection uses a modem and a regular or ISDN phone line.
- Connect using a broadband connection that requires a user name and password**
This is a high-speed connection using either a DSL or cable modem. Your ISP may refer to this type of connection as PPPoE.
- Connect using a broadband connection that is always on**
This is a high-speed connection using either a cable modem, DSL or LAN connection. It is always active, and doesn't require you to sign in.

< Back Next > Cancel

Step 9. Enter the name "CBIT Internet" and click the Next button

New Connection Wizard

Connection Name
What is the name of the service that provides your Internet connection?

Type the name of your ISP in the following box.

ISP Name

CBIT Internet

The name you type here will be the name of the connection you are creating.

< Back Next > Cancel

Step 10. Enter your username and password. Your username and password should be in the format of username@cbit.net.au. Remember that usernames and passwords are case-sensitive – your username will always be lower case.

Leave the three boxes in the lower half of the window checked and click the Next button.

New Connection Wizard

Internet Account Information
You will need an account name and password to sign in to your Internet account.

Type an ISP account name and password, then write down this information and store it in a safe place. (If you have forgotten an existing account name or password, contact your ISP.)

User name: johnsmith@cbit.net.au

Password: ●●●●●●

Confirm password: ●●●●●●

Use this account name and password when anyone connects to the Internet from this computer

Make this the default Internet connection

< Back Next > Cancel

Step 11. Check the box Add a shortcut to this connection to my desktop if you wish and click the Finish button.



Step 12. At this stage the Connect Instructions window should appear. Click the Connect button and you should be ready to use the Internet.

